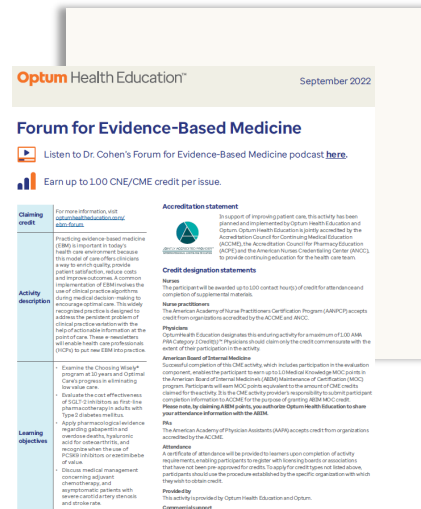


# Optimal Care materials available on Ignite and the Central Library (fka Xyleme) related to Headache



## Algorithms

- Chronic migraine diagnosis and treatment
- Migraine diagnosis and treatment
- Neuroimaging for adults with new-onset headache
- Neuroimaging for adults with recurrent primary headache



## Additional clinician education

Forum for Evidence-Based Medicine 2023 March issue:

- Migraine diagnosis and treatment in the era of gepants, ditans and CGRP monoclonal antibodies

2022 July

- Optimal Care for Neurology summary PDF (available on Ignite and Central Library)
  - Full recorded module available at <https://www.optumhealtheducation.com/optimal-care>

# Grand Rounds Topics and Timing

---

2024

- Jan 24: Behavioral health integration in primary care – Best practices
- Mar 27: Evidence-based approach to headache in primary care
- May 8: Osteoporosis screening, diagnosis and management
- Jul 24: Advances in the Management of Coronary Artery Disease Utilizing CCTA and CAC scoring
- Sep 18: Breast cancer screening – One size does not fit all
- Nov 13: Care of MSK conditions – Procedures your patients need and others they don't

**Time:** 1pm Eastern

**Registration links for live and on-demand:**

<https://www.optumhealtheducation.com/optimal-care-grand-rounds>

**Mailing list sign-up:** <https://www.optumhealtheducation.com/optimal-care-grand-rounds-mailing-list>