

Optimal Care materials available on Ignite and the Central Library (fka Xyleme) related to over/under screening for CA



Algorithms that provide cancer screening considerations

- Colorectal cancer screening-surveillance asymptomatic algorithm
- Screening for prostate cancer algorithm
- Lung cancer screening algorithm
- Cancer screening older adults algorithm
- Ovarian cancer screening with increased genetic risk algorithm
- Evaluation of microscopic hematuria in the adult algorithm
- Evaluation of incidental or palpable thyroid nodule algorithm
- Incidental pulmonary nodules algorithm
- Adrenal incidentaloma algorithm
- Endoscopy in the evaluation of GERD



Education

[Clinician education Specialty modules housed on OptumHealth Education \(OHE\)](#)

- Introduction to Optimal Care
- Gastroenterology
- Urology
- Pulmonary
- Endocrinology

Optimal Care materials available on Ignite and the Central Library (fka Xyleme) related to over/under screening for CA



Forum for Evidence-Based Medicine articles

2023 July

- Prostate cancer screening not indicated in those over age 69 years, though potentially helpful for younger cohorts
- High prevalence of colonoscopy in the elderly without improved outcomes

2023 March

- Cost of low value PSA screening in men over age 69

2023 January

- Primary screening for colorectal cancer – Important update on effectiveness of colonoscopy

2022 May

- Breast cancer screening: Detection is not always beneficial

2021 September

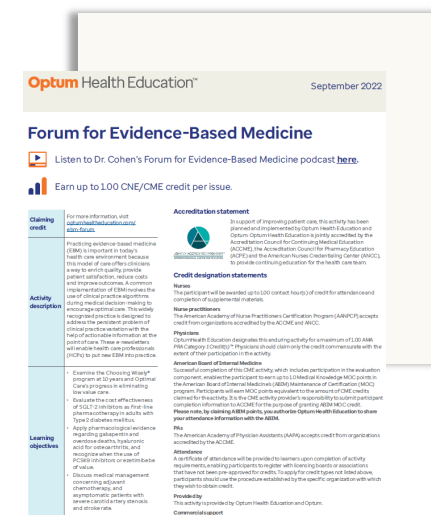
- Screening for ovarian cancer

2020 September

- Colorectal cancer screening and colon polyp surveillance

2020 May

- Should women continue screening mammography beyond 75 years of age?



Grand Rounds Topics and Timing

2024

- Jan 24: Behavioral health integration in primary care – Best practices
- Mar 27: Evidence-based approach to headache in primary care
- May 8: Osteoporosis screening, diagnosis and management
- Jul TBD: Chronic pain management in primary care – Best practices
- Sep 18: Breast cancer screening – One size does not fit all
- Nov 13: Care of MSK conditions – Procedures your patients need and others they don't

Time: 1pm Eastern

Registration links for live and on-demand:

<https://www.optumhealtheducation.com/optimal-care-grand-rounds>

Mailing list sign-up: <https://www.optumhealtheducation.com/optimal-care-grand-rounds-mailing-list>