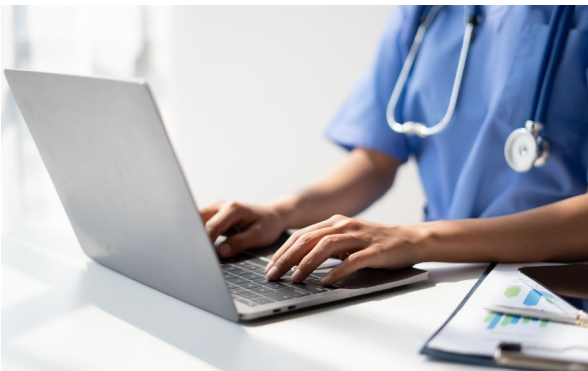


# Optum Health Education—2023 Executive Summary



## Optum Health Education (OHE) is

- A jointly accredited medical education company with an over 30-year history
- A nationally accredited provider of interprofessional continuing education (IPCE)
- The premier health education resource for UHG subsidiary companies

## OHE is committed to

- Providing IPCE that improves patient outcomes and positively impacts the delivery of health care
- Advancing the skills, strategy and/or performance relevant to the learners' clinical practice and/or their role within the health care team
- Fostering the continuing professional development of engaged lifelong learners

NPS score

**91%**



## 2023 at a glance

**Cost savings**  
(based on \$30 per credit)<sup>1</sup>

All learners  
**\$3,468,765.00**

Internal learners  
**\$1,864,642.50**

Total activities available

**569**

Total credits available

**1,010**

Number of attendees

**104,170**

Unique learners\*

**28,539**

Credits issued

**115,626**

\*~50% UnitedHealth Group (UHG) employees; some learners use personal information when creating their OHE account, so exact UHG participation cannot be determined

## Attendance

Conferences  
**2,283**

Live activities  
**14,114**

On-demand activities  
**87,896**

**95%**

of learners committed to making a change in practice after participating in an OHE activity.

**99%**

of learners stated that learning objectives were met.

**88%**

of learners stated that participation enhanced their professional competence.

**86%**

of learners stated that the activities will improve their performance or skills used in their practice setting.

**86%**

of learners stated that the activities will assist in the improvement of their patient outcomes.

### Reference

1. Clemons H, Rodriguez J. Determining fair market value for CME. September 21, 2021. Accessed May 17, 2024.

<https://almanac.acehp.org/Podcasts/Podcasts-Article/determining-fair-market-value-for-cme>

# Optum Health Education—2023 Executive Summary

## Clinical areas

OHE focuses on the educational needs of health care professionals worldwide, including advances, innovations and evidence-based research related to optimizing positive health care outcomes and improving the management of complex conditions.

OHE collaborates with internal and external partners to develop meaningful education that meets the needs of today's health care workforce and supports Enterprise initiatives.

## 2023 highlights

- **Optimal Care Grand Rounds:** actionable content that addresses evidence-based diagnosis and treatment approaches for the complex diseases encountered in practice
- **Optum East Grand Rounds with Reliant Medical Group:** ongoing series designed for frontline staff; recently expanded to include all providers in Optum East region
- **AbleTo, Optum Behavioral Health and UHG's Center for Clinician Advancement:** content addressing factors leading to health care professional stress and burnout
- **Health Equity (HE) community of practice:** HE lexicon and learning pathways, including the Health Equity Foundations on-demand webcast
- **Medical Director and Clinician Leadership Forum 2023:** focused on applied innovation, health technologies and evidence-based research related to optimizing patient care, health care outcomes and benefit management
- **International Nurse Leaders Forum—Conversations on Global Health Care Challenges:** held in Manila, PH, connected international experts and stakeholders to discuss global health care challenges. In 2022, the International Nurses Council reported that a total of 13 million nurses will be needed to fill the global nursing gap in the future
- **OHE Global:** a joint project with Optum in the Philippines, an online platform that shares UHG and Optum clinical expertise, providing IPCE to clinicians in the Philippines



## Client comments

*The OHE team has served as an excellent “extension” of our team. In addition to the accreditation services that we are unable to provide independently, they also covered aspects that, if we had the resources, we could have done as well.*

*OHE's services have made this course a standout among others provided by WellMed since a variety of employees can receive 12 CEUs or CMEs upon completing the course. This has increased interest, engagement and enrollment in the course of just a few days since it has premiered as an eLearning option.*

*The value to the participants has been outstanding, delivering literally hundreds of thousands of dollars in avoided expenditures for the same number of credits.*

*Having the ability to obtain CEUs for our program has allowed almost 1,000 licensed nurses, social workers and dietitians the ability to blend the benefit of evaluating their processes with the credit for their licenses.*

# Optum Health Education—2023 Executive Summary

## Joint/additional accreditation

- Physicians (AMA)
- Physicians' Maintenance of Certification (MOC)
- Nurses (ANCC)
- Nurse Practitioners (AMA and ANCC reciprocity)
- Optometrists (COPE)
- PAs (AMA reciprocity)
- Pharmacists (ACPE-P)
- Pharmacy Technicians (ACPE-T)
- Psychologists (APA)
- Social Workers (ACE through ASWB)
- Dietitians (CDR)
- Dentists and Allied Dental Staff (ADA CERP)
- Coders (AAPC-Certified, AMA reciprocity for live events)
- Counselors and/or Marriage and Family Therapists (APA and ASWB reciprocity)

In addition to Joint Accreditation, OHE partners with a variety of other organizations to provide additional credit types.

A list of all available credit types can be found here:

[optumhealtheducation.com/accreditation](https://optumhealtheducation.com/accreditation)

## Activity modalities



Direct to on-demand webcasts



Newsletters



eLearning



On-site conferences



Grand rounds



Podcasts



National webcasts

## IPCE is free and available to all!

Visit [optumhealtheducation.com](https://optumhealtheducation.com) to create a free account. If you need assistance creating an account, visit the FAQs page for more information.

**Questions?** Email: [moreinfo@optumhealtheducation.com](mailto:moreinfo@optumhealtheducation.com).