

About OHE

Optum Health Education (OHE) is a jointly accredited medical education company with over 30 years of experience providing interprofessional continuing education (IPCE). As a jointly accredited provider, OHE is responsible for planning, implementing, and evaluating IPCE that enhances health care team performance and improves patient outcomes. OHE must comply with Joint Accreditation Criteria, which include maintaining a mission focused on team-based education, identifying and addressing practice gaps, and designing activities that foster active learning and collaboration among multiple professions. We use integrated planning processes, implement strategies to sustain change, and assess the impact of educational interventions on team skills and patient outcomes. In addition, OHE must adhere to the Standards for Integrity and Independence by ensuring content validity, preventing commercial bias, managing financial relationships, and appropriately handling commercial support.

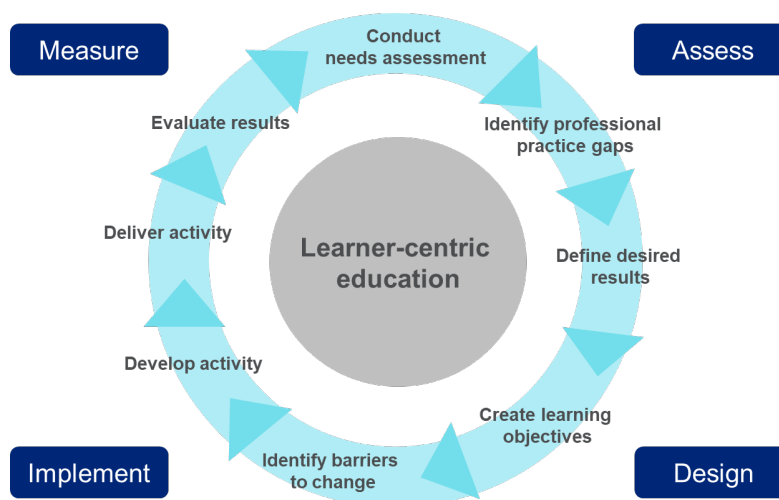
For more information please see: <https://accme.org/accreditation-rules> and <https://www.jointaccreditation.org/joint-accreditation-criteria>.

What is Interprofessional Continuing Education?

Interprofessional Continuing Education (IPCE) brings together members from two or more health professions to learn from, with, and about each other. The goal is to foster collaborative learning, maintain and develop knowledge, skills, strategies, attitudes, and performance necessary for effective interprofessional practice, and ultimately improve health outcomes.

An activity, as defined by the Joint Accreditation, is an educational event, which is based upon the needs that underlie the professional practice gaps of the health care team and/or the individual members of the health care team. Activities are based on valid content and knowledge and skills generally recognized and accepted by the profession as within the basic medical sciences, the discipline of clinical medicine and the provision of health care to the public.

Activity planning process



Activity development: Delineation of responsibilities

Jointly Accredited Provider (OHE)

Oversight and compliance

- Ensure all activity components meet Joint Accreditation and any additional applicable accreditation criteria and standards.
- Oversee the planning process and maintain documentation.
- Review and finalize the master activity planning document.
- Verify applicable accreditation type and complete accreditation applications.

Faculty coordination

- Review faculty disclosures for conflicts of interest (COI); mitigate/resolve COI as applicable.

Content review

- Validate submitted content to ensure it is evidence-based, accurate, relevant, and aligned with the established learning objectives and the intended changes to practice.
- Review content to confirm that it is:
 - Independent from ineligible companies, with a clear separation between education and commercial interests.
 - Based on identified practice gaps, ensuring the activity appropriately addresses the learning needs of the healthcare team.
 - Designed to facilitate meaningful change, specifically aiming to improve:
 - Skills or strategies
 - Performance of the health care team
 - Patient outcomes
 - Developed through an integrated, interprofessional planning process that includes health care professionals representative of the target audience.
 - Supportive of active, team-based learning, encouraging collaborative engagement and interprofessional growth.

Activity implementation

- Support the development of marketing materials and learner recruitment strategies.
- Support activity delivery, as applicable.

Assessment and reporting

- Collect and analyze activity outcomes.
- Share findings with stakeholders as applicable.

Educational partner (Activity requestor)

Activity initiation

- Submit the **online request form** at: optumhealtheducation.com/rfp.
- Complete the **Master Activity Planning** document, which includes the following:
 - Proposed activity scope, including the topic, format/methodology, and target audience.
 - Needs assessment that determines the educational interventions required to address the gap between actual performance (what learners currently know and do) and optimal performance (what learners should know and do).
 - Professional practice gap(s) for the health care team and/or individual health care professionals (HCPs).
 - The intended change in skills, strategy, performance, or patient outcomes for the health care team and/or HCPs.
 - Potential barriers to change that may prevent attendees from integrating new knowledge, competencies, skills, or performance objectives into practice.
 - Additional Joint Accreditation requirements.

Faculty selection

- Identify and confirm planners and faculty (Subject Matter Experts) to develop and deliver content.
- Ensure planners and faculty complete disclosure forms and return completed forms to OHE.

Content development

- Collaborate with planners and faculty to develop educational content.

Marketing and promotion

- Assist in developing marketing materials and learner recruitment strategies.

Activity delivery

- Manage and facilitate logistics for activity delivery, as applicable.