


I. Registration

- These webcasts are intended for invited Optum/UnitedHealth Group employees only.
- Unable to attend one of the live webcasts? Don't worry! **All webcasts will be made available on-demand.**
- You MUST have an OptumHealth Education account in order to register for an activity and claim credit.
 - Go to <https://www.optumhealtheducation.com>
 - If you **Do Not** have an account, click  and enter your information.

II. Accreditation/Continuing education

- Earn 1.00 CME/CNE/APA/ASWB credit for each webcast completed.
- This series is accredited for physicians, PAs, nurses, nurse practitioners, psychologists and social workers.

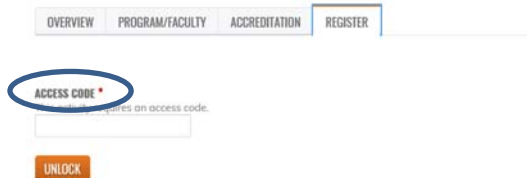
III. Pretest

- **You must be logged into your account to take the pretest.**

Once logged in, go to the course page on the website.
 Click the REGISTER tab




- In the ACCESS CODE box, enter "optum" (all lowercase) and click UNLOCK

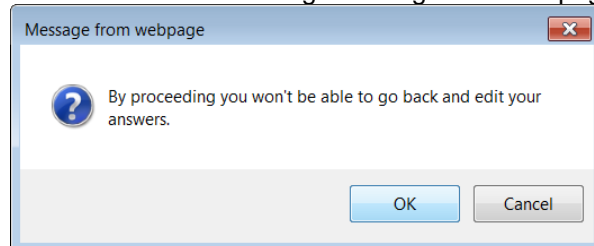



- Click CONTINUE



- Take pretest: Select your answers and press FINISH  (bottom right-hand-side of the page) when complete

- Click "OK" to the following "Message from webpage."



- Review your results and then close out of your browser window. 
 - *Please Note: The pre-activity assessment is not graded. Responses will be collected to develop baseline knowledge levels to assess the activity.*

IV. Participating in the live webcast

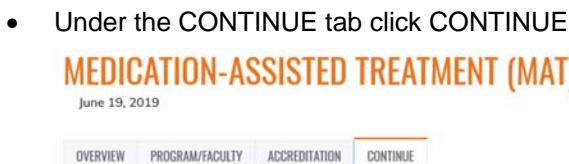
- **Be sure to log into the WebEx using your proper first and last name** (no abbreviations; i.e. Katie R.). This will allow us to quickly and easily pull attendance reports directly from WebEx.
- We encourage you to listen to the audio via your computer or have WebEx call you directly.
- Please remember to **keep your phone on mute** throughout the entire meeting.
- **If you would like to ask the speaker a question or respond to a comment, please use the “chat” feature within WebEx.** Click on the “chat” icon in the upper right-hand corner of your screen to open up your chat window. In the drop-down box, **select “EVERYONE”** prior to pressing “send.”
- A Q&A session will be held at the end of the presentation.


V. Slides

- When available, slides can be downloaded here:
<https://www.optumhealtheducation.com/behavioral-health-2021>

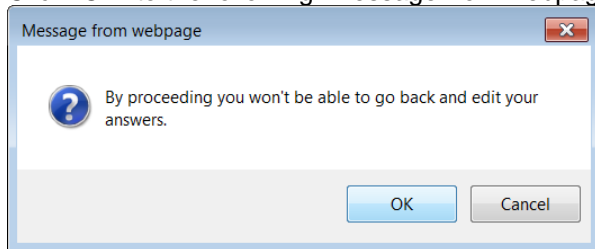
VI. Post-test and how to claim credit



- **Post-activity materials — including claiming credit — must be completed within 30 days of participating in the webcast. No exceptions will be made!**
- You must be logged into your account in order to take the post-test. Once logged in, go to the course page on the website.



- Post-Test: Select your answers and press FINISH  (bottom right-hand-side of the page) when complete

- Click “OK” to the following “Message from webpage.”



- Review your results and then click Next  (bottom right-hand-side)
Please Note: You need a minimum score of 70% in order to move on to the Evaluation. If you did not receive 70%, press “previous”  in the bottom left-hand-side of your screen and re-take the test.



**2021 Lunch and Learns:
Best Practices for Behavioral Health Conditions Series**
*Frequently Asked Questions
January 2021*

- Evaluation: Complete all of the required questions (*) within the Evaluation. When finished, click SUBMIT (bottom of the page)

Please select your preferred educational format for knowledge-based activities.

Case studies
 Didactic lecture/Q&A
 Panel discussion
 Patient demonstration
 Open discussion/Q&A

Please select your preferred media for knowledge-based activities.

Grand round
 Live, on-site conference
 Local dinner meeting
 Monograph
 National specialty society meeting
 Satellite/TV broadcast
 Self-directed independent learning
 Small group workshop
 Teleconference
 Webcast

Please provide us with any additional comments you may have about this educational activity. We appreciate your comments!



- Click Next (bottom right hand-side)

EVALUATION

← RETURN TO ACTIVITY

ACTIVITY PROGRESS

CE INFO
 POSTACTIVITY ASSESSMENT
EVALUATION
 REQUIRED **STOP**
 CREDIT
 CERTIFICATE
 COMPLETE

EVALUATION

Thank you, your submission has been received.
[Go back to the form](#)

ACTIVITY NAVIGATION

← Previous **Next** →



- Under Credit, check the check box next to the type of credit you would like to request.
- Enter your credit hours.
- Check off that you agree (just above the SUBMIT button)
- Click SUBMIT (bottom right hand-side)

CREDIT

OPTIONAL **STOP**
 CERTIFICATE
 COMPLETE

AMA

Claim this type
 AMA can be claimed in 0.25 increments up to a maximum of 1.00.

CREDITS

Enter the amount of credits to claim.

ANCC

Claim this type

ASWB

Claim this type

ATTENDANCE

Claim this type
 I agree that I am only claiming credit commensurate with the extent of my participation in the activity.

Submit



- Click Next (bottom right hand-side)
- Click "Download certificate"

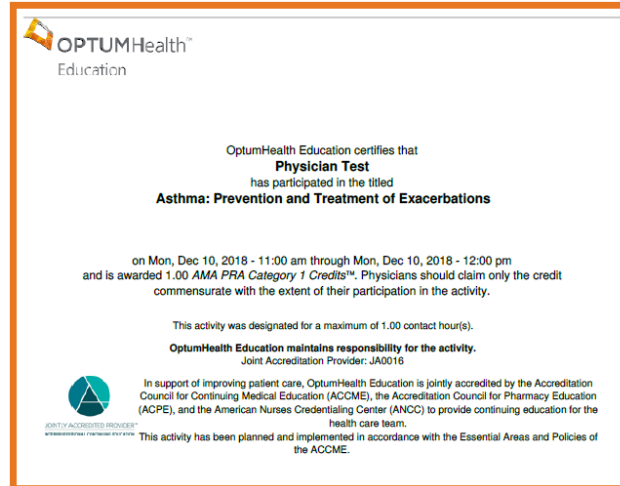
← RETURN TO ACTIVITY

ACTIVITY PROGRESS

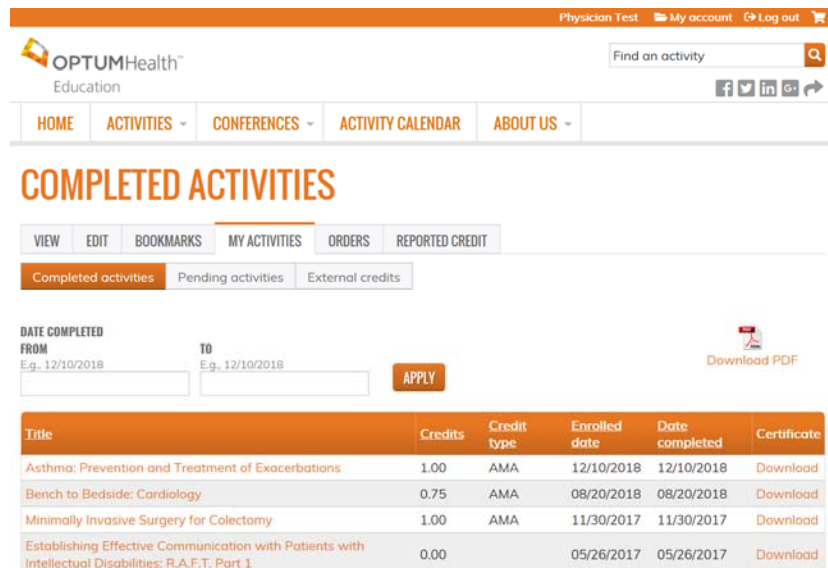
CE INFO **Download certificate**



- Depending on your browser settings, your certificate may open up in the same tab, a new tab or download directly to your desk top. Print or save the PDF of your certificate.



- You may close out of your browser.
- A complete listing of all of your activities can be found in your profile, under My Account, My Activities.



Physician Test My account Log out

Find an activity

HOME ACTIVITIES - CONFERENCES - ACTIVITY CALENDAR ABOUT US -

COMPLETED ACTIVITIES

VIEW EDIT BOOKMARKS MY ACTIVITIES ORDERS REPORTED CREDIT

Completed activities Pending activities External credits

DATE COMPLETED FROM TO APPLY

E.g. 12/10/2018 E.g. 12/10/2018

Title	Credits	Credit type	Enrolled date	Date completed	Certificate
Asthma: Prevention and Treatment of Exacerbations	1.00	AMA	12/10/2018	12/10/2018	Download
Bench to Bedside: Cardiology	0.75	AMA	08/20/2018	08/20/2018	Download
Minimally Invasive Surgery for Colectomy	1.00	AMA	11/30/2017	11/30/2017	Download
Establishing Effective Communication with Patients with Intellectual Disabilities: R.A.F.T. Part 1	0.00		05/26/2017	05/26/2017	Download

VII. Contact Us

- If you have any questions about your participation in this activity, please email OptumHealth Education at moreinfo@optumhealtheducation.com.